



# Natron Equipment & Spares Pvt. Ltd.

## Tee Union

PART NO.	Tube O.D. (A)	Tube O.D. (B)	Tube O.D. (C)
ATU 040404	1/4	1/4	1/4
ATU 060606	3/8	3/8	3/8



## Tube Barb Connector

PART NO.	Stem O.D.	Tube I.D.
ATBC 0606	3/8	3/8

## Tube End Stop

Part No.	TUBE OD
ATES 04	1/4
ATES 05	5/16
ATES 06	3/8
ATES 07	1/2



## Two Way Divider

PART NO.	Stem O.D.	Tube I.D.
ATBC 0606	3/8	3/8



## Union Connector

PART NO.	TUBE O.D.	TUBE O.D.
AUC 0601	3/8	5/32
AUC 0603	3/8	3/16
AUC 0604	3/8	1/4
AUC 0605	3/8	5/16
AUC 0606	3/8	3/8
AUC 0705	1/2	5/16
AUC 0706	1/2	3/8
AUC 0707	1/2	1/2



## Equal Tee

PART NO.	Power O.D.	Power O.D.
APBEU 0606	3/8	3/8
APBEU 0605	3/8	5/16
APBEU 0606	3/8	3/8



## Male Elbow Swivel NPTF Thread

PART NO.	Power O.D.	Power O.D.
AMES 0506	5/16	3/8
AMES 0604	3/8	1/4
AMES 0606	3/8	3/8



## Power Barb Connector

PART NO.	Power O.D.	Power O.D.
APBBC 0404	1/4	1/4
APBBC 0504	5/16	1/4
APBBC 0604	3/8	1/4



## Male Connector NPTF Thread

PART NO.	Power O.D.	Power O.D.
AMC 0406	1/4	3/8
AMC 0604	3/8	1/4
AMC 0606	3/8	3/8

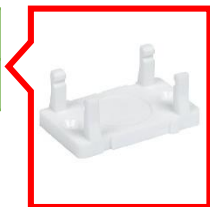




# Natron Equipment & Spares Pvt. Ltd.

## Mounting Clip

PART NO.	Size
AMCLP06	3/8



## Plug



PART NO.	Stem O.D.
APL 06W	3/8
APL 07W	1/2

## Bulkhead Union

PART NO.	TUBE O.D.	TUBE O.D.
ABU 0404	1/4	1/4
ABU 0606	3/8	3/8



## Female BSP Connector

PART NO.	Tube O.D.	Tube O.D.
AFAB0607C	3/8	1/2



## Check Valve

PART NO.	Outlet Tube O.D.	Inlet Tube O.D.
ACHV 0404	1/4	1/4
ACHV 0405	1/4	5/16
ACHV 0505	5/16	5/16
ACHV 0606	3/8	3/8
ACHV 0707	1/2	1/2



## Elbow Union

PART NO.	Power O.D.	Power O.D.
AEU 0603	3/8	3/16
AEU 0604	3/8	1/4
AEU 0605	3/8	5/16
AEU 0606	3/8	3/8
AEU 0704	1/2	1/4
AEU 0705	1/2	5/16
AEU 0706	1/2	3/8
AEU 0707	1/2	1/2



## Hand valve Union Connector

PART NO.	Tube O.D.	Tube O.D.
AHUCS 0606	3/8	3/8

